

# The Communicator

LINCOLN CONSOLIDATED SCHOOLS | FALL 2023



**CHECK IT OUT!  
LCS VIRTUAL ACADEMY  
K-12 LEARNING OPTION**



[www.LincolnK12.org](http://www.LincolnK12.org)

## Lincoln Phone Directory

Robert Jansen, Superintendent.....	484-7001
jansenr@lincolnK12.org	
Karensa Smith, Asst. Superintendent-Curr.....	484-7000 ext. 7658
smithk@lincolnK12.org	
TBD, Dir. of Human Resources .....	484-7002
Robert Williams, Dir. of Student Services.....	484-7054
williamsr@lincolnK12.org	
Philip Bongiorno, Dir. of Facilities.....	484-7039
bongiornop@lincolnK12.org	
Chris Westfall, Athletic Dir. ....	484-7013
westfallc@lincolnK12.org	
Zachary Roberts, Food Service Dir. ....	484-7072
robertsz@lincolnK12.org	
Vicki Coury, Dir. of Communications & Info Svcs. ....	484-7095
couryv@lincolnK12.org	
Jason Fredenburg Transportation Dir. ....	484-7044
fredenburgj@lincolnK12.org	
Business Office.....	484-7042
Community Education. ....	484-7007
Lincoln Senior Center .....	484-7000 ext. 7557
Bemis Farms After-School Phone .....	678-7778
LHS Attendance Line.....	484-7055
<b>Bishop Elementary School .....</b>	<b>484-7074</b>
Abby Smith, Principal ..... smith@lincolnK12.org	
<b>Brick Elementary School .....</b>	<b>484-7031</b>
Paula Robinette, Principal ..... robinette@lincolnK12.org	
<b>Childs Elementary School .....</b>	<b>484-7035</b>
Mary Aldridge, Principal.....aldridge@lincolnK12.org	
<b>Model Early Childhood Center.....</b>	<b>484-7070</b>
Kerry Shelton, Principal .....shelton@lincolnK12.org	
<b>Lincoln Middle School .....</b>	<b>484-7033</b>
Timothy Green, Principal ..... greentk@lincolnK12.org	
<b>Lincoln High School.....</b>	<b>484-7004</b>
Shane Malmquist, Principal ... malmquists@lincolnK12.org	

## BOARD OF EDUCATION

**2023**

President

Jennifer Czachorski

Vice President

Jennifer LaBombarbe

Secretary

Allison Sparks

Treasurer

Thomas Rollins

Trustee

Matthew Bentley

Trustee

Jason Moore

Trustee

Lauren Smith

## BOARD OF EDUCATION 2023 MEETING SCHEDULE

All Board meetings are held at the Board Meeting Room located in Central Office (west end of LHS) and begin at 6:00 pm (unless otherwise noted)

August 28

September 11

September 25

October 9\*

October 23

November 13

November 27

December 11

\*Board Workshop

## COMMUNICATING WITH THE LINCOLN COMMUNITY

For your convenience Lincoln posts school and sport schedules, school board agendas/meeting minutes, dates for important events, and much more in a variety of formats.

- [www.lincolnK12.org](http://www.lincolnK12.org)
- **Website e-mail news and alerts**
- **Facebook: Lincoln Consolidated Schools**
- **SMS Text - 'Y' to 67587**
- **The Communicator Newsletter**
- **Automated calling system**
- **Twitter - @GoSplitters**
- **Instagram - @GoSplitters**

If you are not receiving automated calls or emails, check with your school building for assistance. If you have any suggestions, comments, or questions feel free to contact Vicki Coury at 734-484-7095 or couryv@lincolnK12.org.

## SUPERINTENDENT'S LETTER

As the summer draws to a close, it is with great excitement and anticipation that I extend a warm Welcome Back to each and every one of you for the start of the 2023-2024 school year!

Our Lincoln Consolidated Schools community is built on a foundation of support, kindness, compassion, and love, and it is this very spirit that propels us toward a brighter future together. As we unite as one, the possibilities become limitless, and our collective efforts have the power to shape the destinies of our students and community.

This academic year is especially significant as we embark on implementing our new community created strategic plan. By working together, hand in hand, we will navigate the path to excellence, fostering an environment that nurtures growth and inspires creativity in both students and educators alike. This plan is not merely a document; it is a shared commitment to providing the best educational experience for our students and empowering them to reach their fullest potential.

An integral part of our journey is our commitment to the "Portrait of a Graduate" vision. We firmly believe that every child in our care deserves the opportunity to acquire the essential competencies of critical thinking, empathy, collaboration, global citizenship, adaptability, and communication that will serve as pillars of their success throughout life. By nurturing well-rounded individuals, we ensure that our students are not only academically adept but also possess the social-emotional skills and resilience needed to thrive in an ever-changing world.



The success of our students is a collective effort that involves each member of our Lincoln Consolidated family – educators, staff, students, families, and our community at large. As we join hands in this pursuit, we must remember the profound impact that small acts of kindness, compassion, and understanding can have on the lives of our students. Each smile, word of encouragement, and helping hand has the power to shape a student's day and, in turn, their future.

Let us approach this year with a sense of unity, collaboration, and unwavering determination. Together, we can overcome any challenge, celebrate every victory, and create lasting memories that will stay with our students for a lifetime.

As we step into this new chapter, I extend my gratitude to all of you for your dedication, passion, and unwavering support. Together, let us build a school environment that fosters a love for learning and embraces the uniqueness of every individual.

I look forward to an amazing year of growth, achievement, and shared success. Welcome back, Lincoln Consolidated Schools family!

With Warm Regards,

Robert Jansen  
Superintendent

### 2023/2024 School Hours

#### Elementary - Bishop/Brick

9:00 am to 3:54 pm  
9:00 am to 11:54 am half-day am only

#### Elementary - Childs

8:00 am to 2:54 pm  
8:00 am to 10:54 am half-day am only

#### Middle School

8:00 am to 2:57 pm  
8:00 am to 10:57 am half-day am only

#### High School

7:10 am to 2:07 pm  
7:10 am to 10:07 am half-day am only



Our Lincoln staff is working hard to improve upon our practices so we can ensure our curriculum is guaranteed (all students in the same course/grade level are exposed to the same rigorous curriculum) and viable (that there is time for the students to learn the content that teachers teach/facilitate). This is done through an equity lens of MTSS, MICIP, and PLCs.

## MTSS (Multi-Tiered System of Supports)

The Michigan Department of Education defines MTSS as an all-encompassing framework of different research-based strategies and processes designed to address the needs of the whole child (academics, physical, behavioral, social, emotional) efficiently and effectively in order to remove barriers to learning and help students succeed.

Next year, LCS' focus of our MTSS work will be PBIS (Positive Behavior Interventions and Supports). This past winter, a survey was sent out to all stakeholders asking them to identify their top ten values and behaviors they believe are important in the school setting. Based on the survey results, our PBIS expectations will focus on the following:

### Be Responsible

We show respectful behavior when we care how our actions and words impact others and consistently choose to do the right thing

### Be Respectful

We show responsible behavior when we are dependable, honor our commitments, and accept consequences for what we say and do

### Be Safe

We show safe behavior when we identify with and understand each other's feelings and take care of our own and other's well-being both physically and emotionally so our community is free from danger or harm

### Be Kind

We show kind behavior when we intentionally show a genuine, deep, and selfless concern for others without expecting anything in return



## MICIP (Michigan Integrated Continuous Improvement Process)

MICIP is a pathway for districts to improve student outcomes by assessing the needs of the whole child in order to develop plans and then coordinate funds to implement those plans. Lincoln Consolidated Schools' MICIP plan (which is connected to our Portrait of a Graduate and Strategic Plan) has two goal areas through an ALL Means ALL equity lens:

Goal 1: Improve Academic and Achievement Growth for All Students

- MTSS Academic Strategy

Goal 2: Improve Social and Emotional Health for All Students

- MTSS Affective Strategy
  - At LCS, our main aim is to build a strong and lasting system where everyone - teachers, parents, students, and community members - can use five important skills in their daily interactions. The CASEL 5 competencies are: Self-Awareness, Self-Management, Social Awareness, Relationship Skills, and Responsible Decision-Making
  - LCS has been working with the Michigan Department of Education through the SEL Community of Practice grant. LCS has provided professional learning opportunities to all staff on the CASEL 5. Our opening 2022 Professional Learning included a day to train staff on CASEL Signature Practices. We have integrated CASEL 5 Competencies into our day by utilizing Signature Practices for adult meetings and finding opportunities to include them in our classrooms. LCS has focused on one CASEL competency each month as a district and within each building. We have provided family resources in multiple languages around the focus competency, shared staff bingo boards with prizes to help give each competency meaning and to push staff wellness, and developed leadership resources for administrators to use in modeling the competencies. LCS has also put processes in place for how and when to teach SEL using Second Step curriculum at the elementary buildings and TRAILS curriculum at the Middle and High School.



**PLCS (PROFESSIONAL LEARNING COMMUNITIES)**

The last two years, the Lincoln Consolidated Schools’ instructional staff has been diligently working to understand what it means to be a PLC and what is involved in the process of becoming and sustaining a high-performing PLC.

During district collaborative grade level/department meetings, staff work in teams to focus on the three big ideas of a PLC.

**BIG IDEA #1: FOCUS ON LEARNING**

**The fundamental purpose of the school is to ensure high levels of learning for all students.**

- Together, clarify exactly what students must learn
- Monitor what students must learn in a timely manner
- Provide systemic interventions in addition to grade level content
- Extend learning when outcomes have been mastered

*Every potential organizational practice, policy, and procedure is assessed on the basis of this question:  
Will this ensure higher levels of learning for our students?*

**BIG IDEA #2: A COLLABORATIVE CULTURE AND COLLECTIVE RESPONSIBILITY**

**In order to ensure all students learn at high levels, educators must work collaboratively and take collective responsibility for the success of each student.**

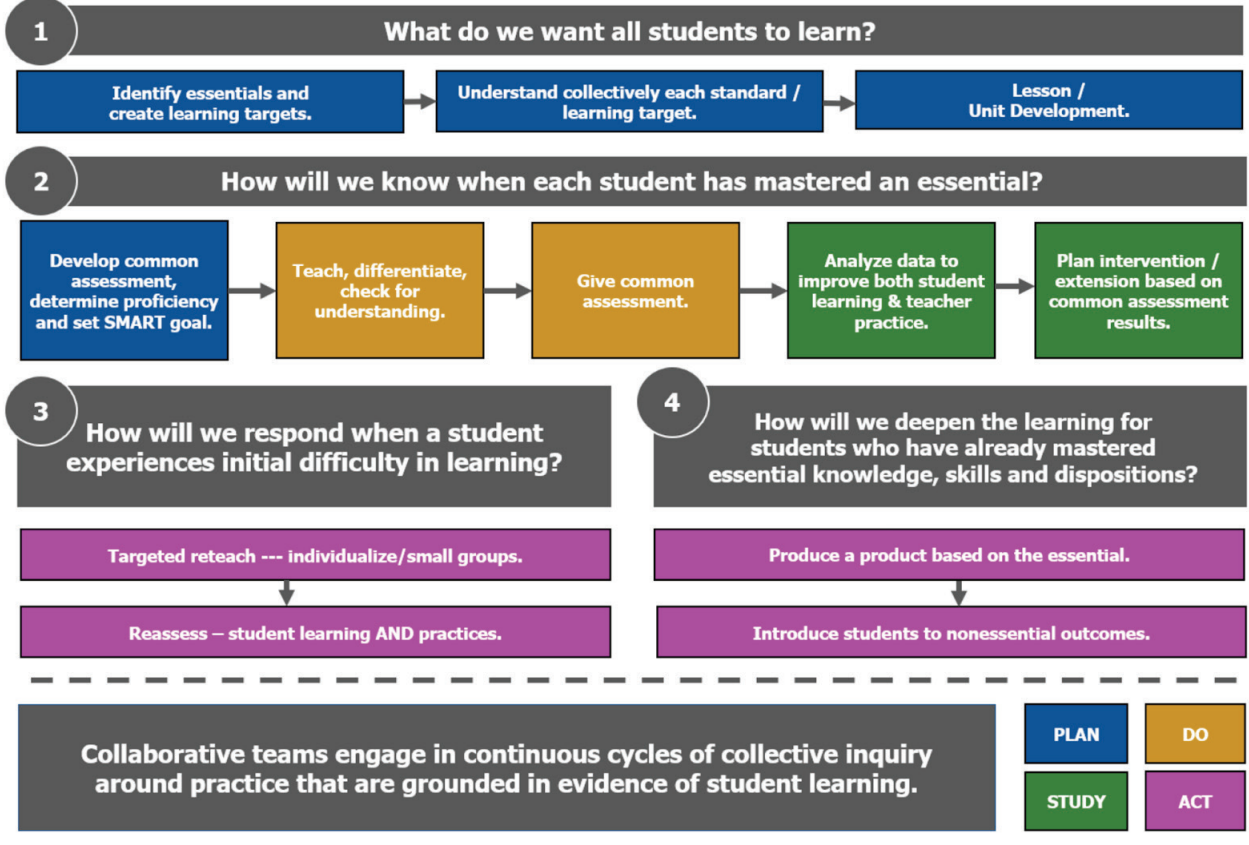
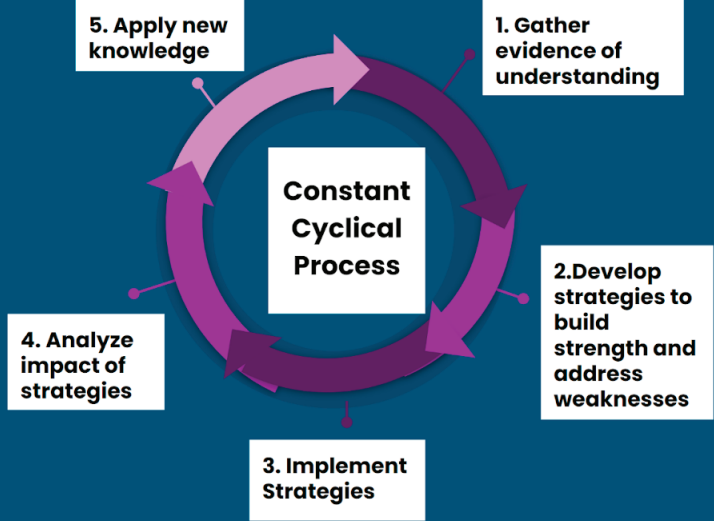
- Not optional- expectation and requirement
- Common goals
- Learn from one another and build shared knowledge
- This is a process

*In a PLC, collaboration represents a systematic process in which teachers work together interdependently in order to impact their classroom practice in ways that will lead to better results for their students, their team, and their school.*

# BIG IDEA #3: A RESULTS ORIENTATION

**Educators in a PLC focus on results- evidence of student learning.**

*All programs, policies, and practices are continually assessed on the basis of their impact on student learning.*



Through the PLC process, staff have begun to integrate the equity learning of Dr. Gholdy Muhammad’s work to modify lessons, resources, and instructional practices in order to help best meet the needs of all of our students.

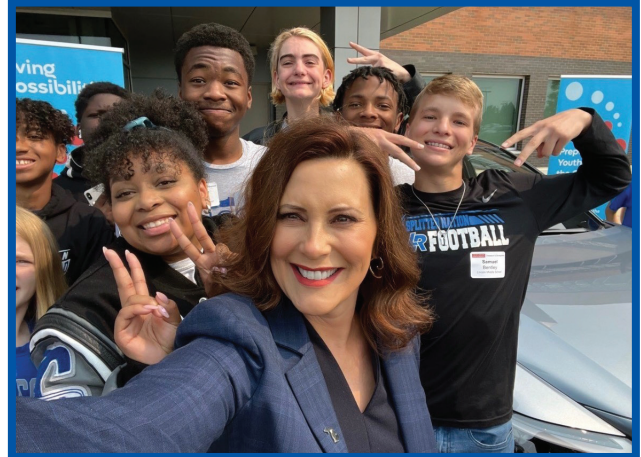
If you have any questions regarding our academic achievement/student success initiatives, please feel free to contact Karensa Smith, Assistant Superintendent of Curriculum and Instruction at [smithk@lincoln12.org](mailto:smithk@lincoln12.org).

## LINCOLN CELEBRATES DRIVING POSSIBILITIES

We are excited to celebrate the generous support of Toyota's Driving Possibilities and the support from other local partners, our LCS community will not only be fostering excellence in STEM education but also advancing our collective efforts as a community toward realizing the competencies outlined in our Portrait of a Graduate. The future is so bright for our LCS Family.

Through Driving Possibilities, K-12 students from Lincoln Consolidated and Ypsilanti Community Schools will experience hands-on STEM (Science, Technology, Engineering, Math) and CTE (Career Technical Education) learning experiences that build their skills and excitement for the careers of tomorrow.

Toyota is contributing more than \$10 million over five years to establish a STEM Institute at Eastern Michigan University's (EMU) School of Education. In addition to EMU, this work will be supported by the University of Michigan College of Engineering and Washtenaw Community College.



## A NEW OPPORTUNITY FOR ESL LEARNERS

### Come Improve your English language skills with Ann Arbor Adult Ed

Ann Arbor Adult Education is excited to offer English as a Second Language (ESL) classes to our friends in the Lincoln Community and surrounding area. ESL classes are designed for levels 2, 3 and 4 and will be held at Lincoln High School. ESL students do not need to be a resident of Lincoln schools to participate.

Information about our class offerings:

- All classes are FREE
- Classes may be held during the daytime or early evenings
- Most classes are held 3 days per week in-person and one day virtually
- Classes will be offered for ESL levels 2, 3 and 4
- Level 4 ESL students may choose to study virtually 3 days per week
- Students' ESL levels are determined by their assessment score
- The assessment is given during the in-person registration
- In-person registration is held at Pathways to Success Academic Campus (Ann Arbor)
- Classes will follow the Lincoln School District's calendar for breaks and vacations
- Online registration and assessment scheduling will begin August 21
- Classes will begin the week of September 18

English Language Survey	Encuesta de idioma español	دینا ايسال اذغللا حسم
		



# ONLINE ENROLLMENT

Enrollments for grades K-12 are taken online at [www.lincolnk12.org](http://www.lincolnk12.org) where you will also submit the required documentation to finalize your student's registration.

## STUDENT ENROLLMENT DOCUMENTS

- Driver's license, state ID, military ID or passport
- Child's Birth Certificate
- Child's Immunization Record - current and up-to-date
- A well-check health appraisal (Kindergarten and Young 5 students ONLY)
- Transcripts (grades 9-12)
- Individualized Education Plan (IEP) and METS (if applicable)
- One of the following Proof of Residency in your name at your current address:
  - Current Tax Bill
  - Rental Agreement or Receipt
  - Mortgage statement/Purchase Agreement
  - Closing Statement
  - Utility Bill/Turn on Notice (water, gas, electric)
  - Voter ID

You can contact the Enrollment Office at [enrollment@lincolnk12.org](mailto:enrollment@lincolnk12.org) or call 734-484-7099 with questions.

## If your family lives in any of the following situations:

- **In a shelter, motel, vehicle, or campground**
- **On the street**
- **In an abandoned building, trailer, or other inadequate accommodations, or**
- **Doubled up with friends or relatives because you cannot find or afford housing** you need

to know that preschool and school-aged children have certain rights or protections under the McKinney-Vento Homeless Education Assistance Act.

You have the right to:

- Go to school, no matter where you live or how long you have lived there. You must be given access to the same public education provided to other students.
- Continue in the school you attended before you became homeless or the school you last attended, if that is your choice and is feasible.
- Receive transportation to the school you attended before you became homeless or the school you last attended, if you request such transportation.
- Enroll in school without giving a permanent address. Schools cannot require proof of residency that might prevent or delay school enrollment.
- Enroll and attend classes while the school arranges for the transfer of school and immunization records or any other documents required for enrollment.
- Enroll and attend classes in the school of your choice even while the school and you seek to resolve a dispute over enrollment.
- Receive the same special programs and services, if needed, as provided to all other students served in these programs.
- Receive transportation to school and to school programs.

When you move, you should do the following:

- Contact the school district's local liaison for homeless education at 734-484-7070 for help in enrolling your child in a new school or arranging for your child to continue in his or her former school. (Or, someone at a shelter, social services office, or the school can direct you to the person you need to contact.)
- Contact the school and provide any information you think will assist the teachers in helping your child adjust to new circumstances.
- Ask the local liaison for homeless education, the shelter provider, or a social worker for assistance with clothing and supplies, if needed.



## SCHOOLS VACCINES REQUIRED FOR SCHOOL ENTRY IN MICHIGAN

Whenever children are brought into group settings, there is a chance for diseases to spread. Students must follow state vaccine laws in order to attend school. These laws are the minimum standard to help prevent disease outbreaks in school settings. The best way to protect students in your care from other serious diseases is to promote the recommended vaccination schedule at [www.cdc.gov/vaccines](http://www.cdc.gov/vaccines). Encourage parents to follow CDC's recommended schedule; by doing so, school requirements will be met.

	All Kindergarteners and 4-6 year old transfer students	All 7th Graders and 7-18 year old transfer students
Diphtheria, Tetanus, Pertussis (DTP, DTaP, Tdap)	4 doses DTP or DTaP 1 dose must be at or after 4 years of age	4 doses diphtheria and tetanus or 3 doses if 1st dose given at or after 1 year of age 1 dose Tdap at 11 years of age or older upon entry into 7th grade or higher
Polio	4 doses 3 doses if dose 3 was given at or after 4 years of age	
Measles, Mumps, Rubella (MMR)*	2 doses at or after 12 months of age	
Hepatitis B*	3 doses	
Meningococcal Conjugate (MenACWY)	None	1 dose at 11 years of age or older upon entry into 7th grade or higher
Varicella (Chickenpox)*	2 doses at or after 12 months of age or Current lab immunity or History of varicella disease	

During disease outbreaks, incompletely vaccinated students may be excluded from school. Parents and guardians choosing to decline vaccines must obtain a certified non-medical waiver from a local health department. Read more about waivers at [www.Michigan.gov/immunize](http://www.Michigan.gov/immunize). \*If the student has not received these vaccines, documented immunity is required. All doses of vaccines must be valid (correct spacing and ages) for school entry purposes.



# A Parent's Guide For Communicating With Your Child's School

## BOARD POLICY 9130: PUBLIC COMPLAINTS

(See full Board Policy at [www.lincolnk12.org](http://www.lincolnk12.org))

Any person or group, having a legitimate interest in the operations of this District shall have the right to present a request, suggestion, or complaint concerning District personnel, the program, or the operations of the District. At the same time, the Board of Education has a duty to protect its staff from unnecessary harassment. It is the intent of this policy to provide the means for judging each public complaint in a fair and impartial manner and to seek a remedy where appropriate.

It is the desire of the Board to rectify any misunderstandings between the public and the District by direct discussions of an informal type among the interested parties. It is only when such informal meetings fail to resolve the differences, shall more formal procedures be employed.

Any requests, suggestions, or complaints reaching the Board, Board members, and the administration shall be referred to the Superintendent for consideration.



### Problem Solving: A Two-Way Process

#### Get Started

- Establish your goal.
- Agree to discussion guidelines.
  - Listen without interrupting.
  - Be honest in your discussions.

#### Listen and Define the Concern

- What is the problem or concern?
- Is there more than one perspective from which to view the problem?
- Is the information each person has about the problem accurate?

#### Identify Solutions

- Each person suggests at least one solution to the problem.
- All parties evaluate each possible solution:
  - Can all parties agree with the solution?
  - Is everyone committed to working on the suggested solution?
  - Will the solution work now and in the future?
  - Is everyone willing to share equal responsibility for making the solution work?
  - Does the solution tell who, when and how?

#### Move Forward

- Agree upon a proposed solution and the role each party will have in implementing it.
- Set a date for checking in with each other.

### Whom Should You Contact?

To ask a question, share a concern, or discuss an issue, follow the chain of command outlined below.

#### On Matters Involving Instruction/Curriculum

1. Classroom Teacher
2. Principal
3. Asst Superintendent of Curriculum & Instruction
4. Superintendent
5. Board of Education

#### On Matters Involving Special Education

1. Classroom Teacher
2. Principal
3. Student Services Director
4. Asst Superintendent of Curriculum & Instruction
5. Superintendent
6. Board of Education

#### On Matters Involving Athletics

1. Coach
2. Athletic Director
3. Building Principal
4. Asst Superintendent of Curriculum & Instruction
5. Superintendent
6. Board of Education

#### On Matters Involving Student Discipline

1. Classroom Teacher
2. Assistant Principal/Dean of Students
3. Principal
4. Asst Superintendent of Curriculum & Instruction
5. Superintendent
6. Board of Education

#### On Matters Involving Facilities/Grounds/ Buildings

1. Principal
2. Director for Facilities
3. Superintendent
4. Board of Education

#### On Matters Involving Transportation

1. Bus Driver
2. Transportation Director
3. Superintendent
4. Board of Education

## LINCOLN EARLY CHILDHOOD SERVICES

The Lincoln Early Childhood Center, located in Model Elementary School, offers a range of comprehensive services for children from birth through age five. The center utilizes a model that emphasizes that parents are a child's first, best, and most influential teachers.

The Early Childhood Center includes classrooms for the Great Start Readiness Program, Headstart, Early Childhood Special Education, and Lincoln's Early On Program. The goal of the center is to establish a primary prevention community available to families living in the Lincoln community. Through strong parental involvement, the Early Childhood Center is an avenue promoting the improved social, cognitive, and physical growth of young children in our community.

### Pre-School

Lincoln offers two different pre-school programs. Students for these programs must be three years old by September 1st and reside in the Lincoln School District. Great Start Readiness Program (GSRP) is a grant-funded pre-school program. Eligibility for this program is based on household income and a child's "risk factors." For more information on this program please call 484-7070.

Lincoln also offers a tuition-based pre-school run by Bemis Farms, and located at Model Elementary. For more information on this program, visit our website at [bemisfarmschildcare.com/lincoln-schools-preschool-childcare](http://bemisfarmschildcare.com/lincoln-schools-preschool-childcare).

## ATTENTION: PARENTS OF CHILDREN BIRTH – AGE FIVE

If you have any concerns about your child's development, the staff at the Lincoln Early Childhood Center at Model Elementary is ready to work with you. We can provide free developmental screenings. When screening results indicate a need for more in-depth information, we can provide evaluation services to determine if a child/family is eligible to receive the following services that our center provides:

- Social Work Services
- Services of School Psychologist
- Speech and Language Services
- Occupational Therapy
- Physical Therapy

For more information, contact 484-7070.

**FREE  
quality  
preschool  
for  
3 and 4  
year-olds**



Participating preschool programs are funded by the US Department of Health and Human Services and the Michigan Department of Education.

No Internet? 1-800-777-2861

[www.washtenawpreschool.org](http://www.washtenawpreschool.org)

## BEMIS FARMS AT LINCOLN: WHERE FRIENDS MEET FRIENDS

Bemis Farms is pleased to provide Preschool and Extended Care Programs for the children of Lincoln Consolidated Schools. We are proud and excited to be a part of this wonderful school district.

Programs are located inside Model and Childs Elementary Schools. Model, Bishop, and Brick Elementary students go to Model Elementary for Extended Care.

Our theme for Lincoln is "Where Friends Meet Friends." Our program provides a safe and friendly place where children can have the opportunity to relax and play with their friends after a long school day. Children learn many important social skills to succeed in life through play, and the Bemis Farms staff will help with conflict management skills, talking through problems, and using manners with friends - all important life skills for today and the future.

The children in the Bemis Farms Lincoln program have daily opportunities to engage in activities to help them both scholastically and socially. Teachers are available to help with homework, and all children will have the opportunity to play alone or in a group. Bemis Farms offers a variety of programs to meet your needs. Meeting friends in a relaxed environment makes this program special. For more information on this program, visit our website at [bemisfarmschildcare.com/lincoln-schools-preschool-childcare](http://bemisfarmschildcare.com/lincoln-schools-preschool-childcare).







Welcome back to Lincoln Consolidated Schools for the 2023-2024 school year! For student safety, we do not publicly publish school bus route information. Families who complete the Request for Transportation will be notified of their bus route information prior to the start of school.

## REQUEST FOR STUDENT TRANSPORTATION

Lincoln Consolidated Schools requires a completed Request for Student Transportation form for each student (with the exception of Model Elementary) needing school bus transportation to reserve a seat on the bus. To request transportation for your child(ren), complete the online form (available online at [www.lincolnk12.org](http://www.lincolnk12.org)) for each student.

Students without an assigned bus will not be allowed to ride the bus. Bus route information will be available prior to the start of school on the “Here Comes the Bus” app.



## BUS RIDERSHIP PROGRAM

The Lincoln student bus ridership program provides an extra layer of SAFETY by making sure students board the correct bus and preventing students from exiting at the wrong stop.

Drivers will be enforcing the ridership program. In order to ride the bus to or from school, students can use:

- Student ID badge (Previous year badges will work)
- Device with the “Here Comes the Bus” app installed showing the barcode on the screen
- Printed barcode from “Here Comes the Bus” app.

If you require a student badge, please contact [transportationoffice@lincolnk12.org](mailto:transportationoffice@lincolnk12.org) with your student’s name and school. Transportation will provide only two (2) badges during the course of the school year. A \$5.00 fee will be assessed to replace additional badges.

## YOUNG 5 & KINDERGARTEN STUDENTS

There MUST be a parent or guardian at the bus stop daily to receive your young 5 & kindergarten student from the bus. We will not leave a young 5 & kindergarten student at a bus stop without a parent or guardian present.

## BUS STOP CHANGE REQUEST

Requests for a bus stop change can be made in the Transportation Office. All requests will be researched and you will be notified of the results within thirty days of the request. Please be aware that all requests must meet the criteria for change and are not automatically honored.

## BUS STOP CRITERIA

For more information on Public Act 187, the list of criteria used to establish bus stops, or frequently asked questions and answers, please visit the Michigan Department of Education website at [www.michigan.gov/mde](http://www.michigan.gov/mde).

Our number one priority is the safe transportation of your child. The procedures we have in place are to make sure we can do so. Your understanding of the challenges we face and your part in making sure we are able to provide the safest and highest quality service possible is truly appreciated.

## PERSONAL CURRICULUM ALTERNATIVE

Generally, to earn a high school diploma, a student must satisfy the requirements of Michigan's Merit Curriculum. The District may modify those requirements, however, by developing a personal curriculum for a student. All students are entitled to a personal curriculum.

A parent or guardian of a student who has completed ninth grade (or the student if at least 18 years old or emancipated), or a student's teacher or counselor, may request a personal curriculum by contacting the High School Principal. A group that includes the student; the student's parent or guardian; and a teacher, guidance counselor, or person acting in a counseling role, will consider the request if the personal curriculum request is made by a student who is at least 18 or who is emancipated, or by a parent or guardian, the group will grant the request and will develop a personal curriculum for the student. For all other requests, the group will develop a personal curriculum if the group determines one is appropriate. For most students, the group that develops the personal curriculum may make only certain modifications to the Merit Curriculum.

For students with disabilities under the Individuals with Disabilities Education Act and for certain students transferring to the District from a nonpublic school or from out of state, the group may make additional modifications. For all students, a personal curriculum must incorporate as much of the Michigan Merit Curriculum content expectations as is practicable for the student, must include measurable goals for the student to achieve while in high school, must include a method to evaluate whether the student met those goals, and must align with the student's educational development plan.

Before a personal curriculum becomes effective, the High School Principal and the student's parent or guardian (or the student if at least 18 or emancipated) must agree to its terms. Once effective, the student's parent or guardian (or the student if at least 18 or emancipated) must communicate with each of the student's teachers to monitor the student's progress on the personal curriculum goals. A student who successfully satisfies his or her personal curriculum may earn a high school diploma even if the student does not otherwise satisfy all of the Michigan Merit Curriculum requirements.

For more information on personal curricula, including what may and may not be modified, please visit the Michigan Department of Education's Personal Curriculum page at: [http://www.michigan.gov/mde/0,1607,7-140-6530\\_30334\\_49879---,00.html](http://www.michigan.gov/mde/0,1607,7-140-6530_30334_49879---,00.html)

## Need a Sports Physical?

The University of Michigan Health System RAHS onsite clinic is available to see your athlete for a physical visit, immunizations and more at the High School or Middle School!  
Call MS: 734-714-9509 or HS: 734-714-9600

## ORLO H. WRIGHT SCHOLARSHIP

The annual report of the Orlo H. Wright Scholarship is available for inspection at the address indicated below during regular school hours by any citizen who so requests.

Lincoln Consolidated Schools  
7425 Willis Road,  
Ypsilanti, MI 48197  
Scholarship Trustee: Rebekah Ward

## ATTENTION KROGER SHOPPERS!

We need your help. It's free and easy. Kroger will give a donation each time you scan your Kroger Plus card or use your phone number at the register.



Go to [www.krogercommunityrewards.com](http://www.krogercommunityrewards.com).

**Krogercommunityrewards.com.** When the website opens click on "Create an Account" and follow the prompts to get started. You will receive an email with details on how to choose a group. Click on the link in the email to register the organization you want to support.



Bishop Elementary .....	VA908
Brick Elementary .....	KP112
Childs Elementary .....	EC780
Lincoln Middle School .....	WE988
Lincoln High School.....	CF985
Lincoln High School (Parent LINC) .....	JU946
Lincoln High School Band .....	QJ986
Lincoln High School Link Crew .....	DE628
<b>Athletic Teams:</b>	
Lincoln Athletic Cross Country .....	KY770
Lincoln Athletic Boys Basketball.....	WH001
Lincoln Athletic Football.....	HR801
Lincoln Athletic Boys Golf.....	XU936
Lincoln Athletic Lacrosse.....	RW993
Lincoln Athletic Boys Soccer .....	XH297
Lincoln Athletic Softball .....	KP787
Lincoln High School Swimming .....	IQ422

Do you use your phone number at the register? Call 877-576-7587 to get your Kroger Plus card number.

## INTEGRATED PEST MANAGEMENT NOTIFICATION

State of Michigan law requires that schools and day care centers that may apply pesticides on school or day care property must provide an annual advisory to parents or guardians of students attending the facility.

Please be advised that Lincoln Consolidated Schools utilizes an Integrated Pest Management (IPM) approach to control pests. IPM is a pest management system that utilizes all suitable techniques in a total pest management system with the intent of preventing pests from reaching unacceptable levels or to reduce an existing population to an acceptable level. Pest management techniques emphasize sanitation, pest exclusion, and biological controls. One of the objectives of using an IPM approach is to reduce or eliminate the need for chemical applications of pesticides. However, certain situations may require the need for pesticides to be utilized.

As required by State of Michigan law, you will receive advance notice regarding the non-emergency application of a pesticide such as an insecticide, fungicide, or herbicide, other than a bait or gel formulation, that is made to the school or day care grounds or buildings during this school year. Please note that notification is not given for the use of sanitizers, germicides, disinfectants, or anti-microbial cleaners. In certain emergencies, such as an infestation of stinging insects, pesticides may be applied without prior notice to prevent injury to students, but you will be notified following any such application.

Advance notification of pesticide applications, other than a bait or gel formulation, will be given by at least 48 hours to the application by the following two methods. The first method will be by posting at the main entrance to your school/day care center. The second method will be posting in a public, common area of the school or day care center, other than an entrance. We will post in your school's Main Office.. Please be advised that parents or guardians of children attending the school may review the school's Integrated Pest Management Program and records of any pesticide application upon request

Please be advised that parents or guardians of children attending the school or day care center are entitled to receive the advance notice of a pesticide application, other than a bait or gel formulation, by first class United States mail postmarked at least 3 days before the pesticide application, if they so request. If you prefer to receive the notification by first class mail, please contact your building/program administrator for a form and return it to our office.

Bishop Elementary School	Abby Smith	484-7074	smith@lincolnk12.org
Brick Elementary School	Paula Robinette	484-7031	robinette@lincolnk12.org
Childs Elementary School	Mary Aldridge	484-7035	aldridge@lincolnk12.org
Early Childhood Center	Kerry Shelton	484-7070	shelton@lincolnk12.org
Lincoln Middle School	Tim Green	484-7033	greentk@lincolnk12.org
Lincoln High School	Shane Malmquist	484-7004	malmquists@lincolnk12.org



### SERVICES WE PROVIDE

- Physical Exams • Sick Visits • Immunizations • Insurance Enrollment • Nutrition Counseling
- Health & Fitness Education Programs and Groups • Confidential STI & Pregnancy Testing
  - Referrals for Community Resources
- Confidential Mental Health Services and Psychotherapy

**FOR THE HEALTH & SAFETY OF OUR PATIENTS, WE ARE OPEN YEAR-ROUND. CALL TODAY TO SCHEDULE AN APPOINTMENT!**

RAHS-Brick Elementary School - (734) 714-9606

RAHS-Lincoln Middle School - (734) 714-9509

RAHS-Lincoln High School - (734) 714-9600

We are open to all school-age youth 21 years old and younger. You do not need to be a registered student at these schools to receive services. We accept insured and uninsured patients, regardless of ability to pay. Interpreters and translation services available upon request.



## NATIONAL SCHOOL LUNCH PROGRAM – COMMUNITY ELIGIBILITY PROVISION

Lincoln Consolidated Schools will be participating in the Community Eligibility Provision (CEP) as part of the National School Lunch and School Breakfast Programs for the School Year 2023-2024.

**The GREAT NEWS is that ALL students enrolled at our school can receive a healthy breakfast and lunch at NO CHARGE to your household each day.** There continues to be a charge for extra Ala Carte items.

We need your household to **fill out and sign the Education Benefits Form**. This information is critical in determining the amount of money that our school receives from a variety of State and Federal supplemental programs like Title I A, At-risk (31a), Title II A, E-Rate, etc.

These supplemental programs have the potential to offer supports and services for our students including, but not limited to:

- Instructional supports (staff, supplies & materials, etc.)
- Non-instructional services (counseling, social work, health services, etc.)
- Professional Learning for staff
- Parent and Community engagement supplies and activities
- Technology

We are asking that you please complete and submit it as soon as possible to ensure that additional funding for our school is available to meet the needs of our students. All information on the application submitted is confidential. Without your assistance in completing and returning the attached application, our school cannot maximize the use of available State and Federal funds.

If we can be of any further assistance, please contact us at 734.484.7072.

### WE NEED YOUR HELP!

In order to receive the most at-risk funding, we need EVERY FAMILY to complete a education benefits form This information is used to provide critical federal and state funding to the schools.

*Thank You!*

## SETTING UP YOUR MEAL MAGIC SCHOOL LUNCH ACCOUNT

Starting in the fall, Lincoln will begin using Meal Magic to manage student meal accounts. A parent username and password are needed to review your student's account and to process a credit card deposit. You will need student names and ID's, the number portion of your student's school email address, to set up accounts.

- Go to [lincoln.familyportal.cloud](http://lincoln.familyportal.cloud)
- Click "My Account"
- Click "I need to register as a Family Portal User"
- Enter in your email address to receive a link to create an account
- Follow link in your email to create an account
- Add Students to your account (You will need student ID number)

Parents may make online credit card deposits to student food service accounts through their Meal Magic Account. Please note that there is a \$2.00 fee per transaction to cover processing costs. One deposit may be split among more than one family member without incurring an additional \$2.00 fee. Visa, MasterCard, and Discover cards are accepted.



## EDUCATION BENEFITS FORM SY 2023 - 2024

District: \_\_\_\_\_ School: \_\_\_\_\_

### Part A: STUDENT INFORMATION - Complete for each student Pre-K through 12th Grade

Student's Last Name	Student's First Name	Grade Level	School	Identify H if Homeless M if Migrant R if Runaway F if Foster

### Part B: BENEFITS RECEIVED (if applicable)

If any member of your household receives Food Assistance Program (FAP), Family Independence Program (FIP), or FDPIR, provide the name and case number for the person who receives benefits. Bridge Card Numbers and Medicaid Numbers are NOT ACCEPTABLE case numbers.

Name: \_\_\_\_\_ Case Number: \_\_\_\_\_

Part C: HOUSEHOLD SIZE	Part D: ANNUAL HOUSEHOLD INCOME - Select the appropriate range of combined annual income for all people in the household (Include all income before taxes)		
<input type="checkbox"/> 1 →	<input type="checkbox"/> At or below \$18,954	<input type="checkbox"/> Between \$18,955 and \$26,973	<input type="checkbox"/> At or above \$26,974
<input type="checkbox"/> 2 →	<input type="checkbox"/> At or below \$25,636	<input type="checkbox"/> Between \$25,637 and \$36,482	<input type="checkbox"/> At or above \$36,483
<input type="checkbox"/> 3 →	<input type="checkbox"/> At or below \$32,318	<input type="checkbox"/> Between \$32,319 and \$45,991	<input type="checkbox"/> At or above \$45,992
<input type="checkbox"/> 4 →	<input type="checkbox"/> At or below \$39,000	<input type="checkbox"/> Between \$39,001 and \$55,500	<input type="checkbox"/> At or above \$55,501
<input type="checkbox"/> 5 →	<input type="checkbox"/> At or below \$45,682	<input type="checkbox"/> Between \$45,683 and \$65,009	<input type="checkbox"/> At or above \$65,010
<input type="checkbox"/> 6 →	<input type="checkbox"/> At or below \$52,364	<input type="checkbox"/> Between \$52,365 and \$74,518	<input type="checkbox"/> At or above \$74,519
<input type="checkbox"/> 7 →	<input type="checkbox"/> At or below \$59,046	<input type="checkbox"/> Between \$59,047 and \$84,027	<input type="checkbox"/> At or above \$84,028
<input type="checkbox"/> 8 →	<input type="checkbox"/> At or below \$65,728	<input type="checkbox"/> Between \$65,729 and \$93,536	<input type="checkbox"/> At or above \$93,537

**\* Special Instructions for households with more than 8 people: DO NOT check the boxes above. Instead, fill in items below:**

Household size (# people): \_\_\_\_\_ Total annual income: \_\_\_\_\_

### Part E: CERTIFICATION - The head of household or adult designee who completed this form must complete this certification section

I certify (promise) that all information on this form is true and that all income is reported to the best of my knowledge. I understand that this form may impact the amount of State or Federal funding allocated to my local school district. I understand that the information I have provided may be verified.

\_\_\_\_\_  
(Signature) (Printed Name) (Date)

\_\_\_\_\_  
(Address) (City) (Zip)

\_\_\_\_\_  
(Email Address) (Home Phone) (Work Phone)

**Do NOT fill out this section. This is for school use only.**

Status: F \_\_\_\_\_ R \_\_\_\_\_ N \_\_\_\_\_ Determining Official's Signature: \_\_\_\_\_ Date: \_\_\_\_\_

## **INSTRUCTIONS FOR COMPLETING THE EDUCATION BENEFITS FORM**

This form is used to determine eligibility for state benefits for which your child(ren)'s school may qualify. Please complete, sign, and return this form to your child's school.

If any member of your household receives benefits from the Food Assistance Program (FAP), Family Independence Program (FIP), or FDPIR, please follow these instructions:

**Part A: Student Information** – For each student in the household Pre-K through 12th grade, list the last name, first name, grade level, school, and H if homeless, M if Migrant, R if Runaway or F if a Foster Child.

**Part B: Benefits Received** – If any household member, including adults, receives Food Assistance Program (FAP), Family Independence Program (FIP), or Food Distribution Program on Indian Reservations (FDPIR), provide the name and case number. Bridge Card Numbers and Medicaid Numbers are NOT ACCEPTABLE case numbers.

**Part C: Household Size** - Check the box for the total number of individuals living in your household. This should include all children and adults, related and un-related, that live in a single dwelling and share income and expenses.

**Part D: Annual Household Income** – Skip this part

**Part E: Certification** - Sign the form. Print your name and date.

If your household does not receive benefits from the Food Assistance Program (FAP), Family Independence Program (FIP), or FDPIR, please follow these instructions:

**Part A: Student Information** - For each student in the household Pre-K through 12th grade, list the last name, first name, grade level, school, and H if homeless, M if Migrant, R if Runaway or F if a Foster Child.

**Part B: Benefits Received** – Skip this part

**Part C: Household Size** – Check the box for the total number of individuals living in your household. This should include all children and adults, related and un-related, that live in a single dwelling and share income and expenses.

**Part D: Annual Household Income** – Moving across the same row as the household size check box, check the box that shows the range of annual income for all people in your household. Make sure to include all of the following income sources: work, welfare, child support, alimony, pensions, retirement, Social Security, SSI, VA benefits, child income and/or all other income. The amount should be before any deductions for taxes, insurance, medical expenses, child support, etc.

**Part E: Certification** - Sign the form. Print your name, date, and contact information.



## **FAMILY EDUCATIONAL RIGHTS AND PRIVACY ACT ANNUAL NOTIFICATION OF RIGHTS & DESIGNATION OF DIRECTORY INFORMATION**

Each year the Lincoln Consolidated School District is required to give notice of the various rights accorded to parents or students pursuant to the Family Educational Rights and Privacy Act ("FERPA"). Parents and eligible students have a right to be notified and informed. In accordance with FERPA, you are notified of the following:

- 1. RIGHT TO INSPECT:** You have the right to inspect and review substantially all of your education records maintained by or at the Lincoln Consolidated School District. This right extends to the parent of a student under 18 years of age and to any student age 18 or older.
- 2. RIGHT TO REQUEST AMENDMENT:** You have the right to seek to have corrected any parts of an education record which you believe to be inaccurate, misleading or otherwise in violation of your rights. This right includes the right to a hearing to present evidence that the record should be changed if a designated official of the Lincoln Consolidated School District decides not to alter the education records according to your request. If no change is made to the education record after the hearing, you have a right to place a written rebuttal in the record.
- 3. RIGHT TO PREVENT DISCLOSURES:** You have the right to prevent disclosure of education records to third parties with certain limited exceptions. It is the intent of the Board of Education to limit the disclosure of information contained in your education records to those instances when prior written consent has been given to the disclosure, as an item of directory information of which you have not refused to permit disclosure, or under the provisions of FERPA which allow disclosure without prior written consent.
- 4. RIGHT TO COMPLAIN:** You have the right to file a complaint with the United States Department of Education concerning the alleged failure of the Lincoln Consolidated School District to comply with FERPA. Your complaint should be directed to:  
Family Policy and Regulations Office  
Office of Management, U.S. Department of Education  
400 Maryland Avenue SW, Washington, DC 20202  
(202) 732-2057

**5. RIGHT TO OBTAIN POLICY:** You have the right to obtain a copy of the policy adopted by the Board of Education in compliance with FERPA. A copy may be obtained in person or by mail by contacting the office of the Superintendent.

**6. RIGHT TO OBJECT TO RELEASE OF DIRECTORY INFORMATION:** Generally, school officials must have written permission from the parent of a student or an eligible student before releasing any information from a student's record. However, FERPA allows school districts to disclose, without consent, "directory" type information. The Board of Education of the Lincoln Consolidated School District has designated the following personally identifiable information contained in a student's education record as "directory information":

- Student's name
- Address
- Telephone number
- Picture
- Parent or guardian
- Date and place of birth
- Height & weight
- Major field of study
- Dates of attendance or grade placement
- Honors and awards received
- Participation in and eligibility for officially recognized activities and sports
- Most recent educational agency or school attended by the student

Unless you advise the District that you do not want any or all of this information released, school officials may release the personally identifiable information it has designated as directory information. Upon such objection, this information will not be released without the prior consent of the parent or eligible student.

You have three weeks from the receipt of this notice to advise the District in writing of any or all of those types of information about the student you refuse to permit the District to designate as directory information. Your objections should be addressed to the respective building principal. Completing this form will provide written notification to the District and this information will not be released without the prior consent of the parent or eligible student.

Building Principal: \_\_\_\_\_ Child: \_\_\_\_\_

I would prefer that the following information not be released in regards to the child named above:

\_\_\_\_\_

\_\_\_\_\_  
Parent/Guardian

\_\_\_\_\_  
Date



## PORTRAIT OF A GRADUATE

### CRITICAL THINKING

*Our students...*

- Apply systematic thinking that is clear, rational, open-minded, and informed by evidence
- Understand a global view of societal issues and propose solutions
- Reflect critically on solutions and outcomes in order to effect change
- Take action through skillfully analyzing, assessing, and reconstructing

### EMPATHY

*Our students...*

- Demonstrate awareness, sensitivity, concern, and respect to connect with others' feelings, opinions, experiences, and culture
- Actively chose to consider what others are thinking, feeling, or experiencing when seeking to understand various perspectives and opinions

### COMMUNICATION

*Our students...*

- Articulate thoughts and ideas effectively using oral, written, and nonverbal communication skills in a variety of forms, tools, and contexts
- Listen effectively to understand values, attitudes, intentions, and knowledge
- Use communication for a range of purposes and audiences (e.g. to inform, instruct, motivate, and persuade)

### COLLABORATION

*Our students...*

- Recognize personal strengths and validate strengths of others to build collective commitment and action
- Enrich the learning of both self and others
- Seek, contribute, and respond to feedback and diverse perspectives to achieve inclusive, collective outcomes through cooperation and teamwork

### GLOBAL CITIZENS

*Our students...*

- Value and embrace diverse cultures and unique perspectives through mutual respect and open dialogue
- Demonstrate integrity and responsibility through equitable and empathetic behaviors
- Contribute and affect positive change in the health, balance, and sustainability of the world around one's self
- Will leave a personal positive legacy for tomorrow's citizens

### ADAPTABILITY

*Our students...*

- Work effectively in a climate of changing priorities
- Demonstrate agility in thoughts and actions
- Are resilient when faced with adversity
- Understand and balance diverse views and beliefs
- Acclimate to various roles and situations with flexibility

## SUMMER ACADEMY FIELD TRIPS

Students attending the Summer Academy visited WCC, the South & West Washtenaw Consortium vocational center, and Crosswinds marsh.



## BRICK-TASKIC CAN SUMMER PROGRAM

Students had a terrific time at the Brick CAN Summer Program. We are so thankful for CAN and all they do for our families!!



## BISHOP CARNIVAL

It was thrilling to see all of our Bishop community enjoying the carnival! We have to give a shout out to all of the parent volunteers and BRAVO for organizing this activity. This is a stupendous way to wrap up a stupendous year.



## CHILDS POLLINATOR GARDEN

The students in the upper grades had fun sprucing up the pollinator garden on the upper grade playground. Stop by and visit it this summer, look for a butterfly, leave a pretty rock, and maybe even spot a fairy!

## LHS STUDENTS VISIT THE HENRY FORD

In May Mr. Weathers and Mrs. Warford took 48 students from their AP U.S. Government, AP Economics, and African American History classes to the Henry Ford Museum in Dearborn. The students went through the "With Liberty and Justice for All" exhibit which had artifacts and materials regarding the American Revolution, the Women's Suffrage Movement, and the Civil Rights Movement. Many students were able to sit on the actual bus where Rosa Parks was arrested for refusing to give up her seat in Montgomery, Alabama in 1955 and to hear a presentation of that event. Students then had a few hours to explore other exhibits at the Museum such as Mathematica, Racing in America, and Heroes of the Sky.





## LINCOLN TEACHERS TOUR PERU

Lincoln High School teacher Mike Weathers and Lincoln Middle School teacher Dani Weathers joined 11 other teachers and college professors on a two week teacher study tour to Peru. This tour was sponsored by GEEA, the Global Economic Education Alliance. The 13 participants spent five nights in Lima, five nights in Cusco, and three nights at Posada Amazonas in the Amazon rain forest. Lima is the capital of Peru and Cusco was the Incan capital. Highlights of the trip included tours of the cities of Lima and Cusco, visiting the Central Bank of Peru, visiting several museums and cathedrals, exploring many UNESCO World Heritage sites including Machu Picchu and Sacsayhuamán, exploring the wildlife in the Amazon rain forest, and the opportunity to enjoy eating Peruvian cuisine. The participants also attended 4 Peruvian schools, where they learn about the Peruvian educational system. Both Mike and Dani Weathers are excited about implementing positive experiences of this trip into their classes this year.



## LINCOLN THEATRE DEPARTMENT PRESENTS “ELF: THE MUSICAL”

The Lincoln Theatre Department is excited to start the school year off with a musical production perfect for the winter season, “Elf the Musical”. Based on the 2003 New Line Cinema hit, Elf, the story follows Buddy as he learns about his real father and endeavors to win him over and teach New York about the meaning of Christmas. Auditions will be held during the second week of school, so watch Facebook, email, and in-school announcements for days and times. In addition to high school students, middle school students and community members are welcome to try out too. The show runs the weekend before Thanksgiving.

Not interested in being on stage? Don’t worry, the Theatre Department offers opportunities in all aspects of a theatrical production. Crew members help design and build the set, props, costumes, and make-up. Some roles allow students to learn how to operate the lights and sound board. Students interested in roles on the crew should also come to auditions (no singing necessary).

After the fall musical rehearsals begin, the Theatre Department dives right into working on the traveling show. For this production, interested students perform a 45-minute show for two events: The Mid-Michigan Theatre Arts Festival and MIFA (Michigan Interscholastic Forensic Association). The Mid-Michigan Festival is a critiqued, but non-competitive, festival featuring productions from high schools from all over the state. It is a two-day experience, which includes an overnight trip. MIFA is a one-act competition where the winners advance from regionals to division to states. Each year MIFA alternates between comedies and drama. This year is a comedy year. Lincoln will be putting on a production of “The Wonder Hat.”

The final production of the year is the play “Radium Girls,” a story of the women that painted the luminescent radium on watches faces in the early 1920s. Auditions will be in February, with the show in May. Watch for announcements with the audition times.

For anyone that would like to learn more about the Theatre Department, there will be an informational meeting during the first week of school. For further information please contact the Lincoln Theatre Boosters ([boosters@lincolnthatreboosters.org](mailto:boosters@lincolnthatreboosters.org)) or the Director, Mr. Martin Jacobs ([jacobs@lincolnk12.org](mailto:jacobs@lincolnk12.org)).





# LINCOLN COMMUNITY EDUCATION

PROGRAM DETAILS & REGISTRATION  
 WWW.SPLITTERCOMMUNITY.COM  
 734-484-7007



## CAMPS ~ CLINICS ~ PROGRAMS ~ ACTIVITIES THROUGHOUT THE YEAR

- Soccer
- Lacrosse
- Basketball
- Little League Baseball/Softball
- Youth Football & Cheer
- Youth Swim Lessons
- Riptides Swim Club
- USA Swim Club
- LAB Track Club
- Safety Town
- Jr. Theatre Camp
- Youth Choir
- Dance & Tumbling
- Karate
- Family Fun Nights
- Group Fitness Classes
- Adult Lap Swim
- Family Open Swim



Stay up to date on all new offerings  
 Follow us on Facebook

\*LINCOLN COMMUNITY EDUCATION\*

# LINCOLN ATHLETIC BUILDING

7267 Willis Road, Ypsilanti, MI 48197

## Lincoln Athletic Building Membership Levels

Memberships are done in person  
 Please bring in proper ID to confirm membership you qualify for

### Resident Membership – \$20/Month

Available to all members of the Lincoln Community – verified by an address within the Lincoln Consolidated School District boundaries. Resident pass members have access to the workout facility, and use of the fieldhouse track, turf, and batting cages when they are scheduled to be open to members. Resident pass members may add any children (Under 18) for an additional \$5/month.

### Non-Resident Membership - \$40/ Month

Available to all applicants that are not members of the Lincoln Community. Non-resident pass members have all of the same access rights as Resident Pass members. Non-Resident pass members may add any children (Under 18) for an additional \$10/month.

### Staff Membership – \$25/Year

The LCS Staff pass starts on August 1st and ends July 31st of the following year. It includes all regular membership rights. Spouses/partners of LCS Staff are eligible for membership at the Resident Pass purchase rate, regardless of residence. Staff members may add any children under the age of 18 for an additional \$5/month.

### Student Membership – \$10/Year

The Student Pass starts on August 1st and end July 31st of the following year. All students of the Lincoln Consolidated School district are required to purchase an annual student pass for access to the LAB. Students 15 & Under must be accompanied by a parent or coach to use the facility.

### Daily Pass – \$8/Day

Visitors may purchase a daily member pass and enjoy membership benefits until the building's close of business that day

**OPEN DAILY**  
 734-484-7007

#### CLOSED Dates

- New Year's Day
- Martin Luther King Jr. Day
- President's Day
- Memorial Day
- Independence Day
- Labor Day
- Thanksgiving Day
- Christmas Eve
- Christmas Day
- New Year's Eve
- New Year's Day

FOR SCHEDULE AND  
 ADDITIONAL INFORMATION  
 FOLLOW US ON FACEBOOK  
 \*LINCOLN ATHLETIC BUILDING\*



## TALK: TEXT AND LEARN FOR KINDERGARTEN

Parents and caregivers can sign up to receive text messages offering simple activities to improve their children's literacy. The statewide service, called TALK (Text and Learn for Kindergarten), sends two text messages a week suggesting activities that parents and caregivers can easily incorporate into daily routines with their children.

Parents may sign up by texting **TALK to 75547** or visiting **texttolearn.com**. The texts are available in English or Spanish.

Each message begins with one of the five early literacy practices and details an activity parents can use to help their child develop early literacy skills, which are reading, singing, talking, writing, and playing.

The texts go beyond literacy and help parents build other important skills such as premath and social emotional skills. The more parents and caregivers talk and listen to young children, the easier it is for them to learn to read and write when they start kindergarten. This is because simple activities such as singing and playing every day help kids develop the cognitive and language skills they need to do well in school.

TALK is available to parents and caregivers in Michigan with children ages 5 years and younger.



## ELEMENTARY CROSS COUNTRY Grades 2-5

Registration Opens in August  
9/4-10/21

Practices: Begin September 4, RAIN OR SHINE. After school until 5:15 in the field between Brick and Bishop. Every Monday, Tuesday and Thursday

Meets: MORNINGS OF 9/16, 9/30, 10/14 AND 10/21

Registration: Sign Up on [LincolnK12.org](http://LincolnK12.org) Community Education Page  
Closes September 11, 2023

**\$85** Covers  
Uniform shirt  
and Athletic Fee

Athletes should bring plenty of water, running shoes and a healthy snack.  
Questions? Email Coach Nicole Mikel at [mikeln@lincolnk12.org](mailto:mikeln@lincolnk12.org)



## LINCOLN GOLDEN AGES SENIOR CENTER

Are you 55 years old or older and are looking for something NEW? Then the Lincoln Golden Ages Seniors are looking for YOU! We are a group of area seniors who enjoy being social and LOVE to have fun! Our center offers a variety of educational, social, and physical activities such as yoga, fitness, cards, bingo, community resource speakers, computer classes, quilting and craft classes, monthly trips, and intergenerational activities with our Lincoln students. We are also involved in community outreach projects. Membership dues are \$15.00 per year. Make us your "home away from home." We are located in Brick Elementary, west entrance. The center is not open if Lincoln Schools are closed due to inclement weather. Contact us at 734-484-7000 x7557 if you have any questions.



# LINCOLN CONSOLIDATED SCHOOLS | 2023-2024 MASTER CALENDAR

JULY 2023						
S	M	T	W	Th	F	S
						1
2	3	4	5	6	7	8
9	10	11	12	13	14	15
16	17	18	19	20	21	22
23	24	25	26	27	28	29
30	31					

## AUGUST

15-17..... New Teacher/Mentor Professional Learning  
 17-18..... CPI Training  
 21..... Opening Day-Teacher Work Day  
 22-24..... Staff Professional Learning  
 25..... No Staff- Buildings Open  
 28..... Opening Day with Students  
 K-5 Elementary half-day; 6-12 Secondary full day

## SEPTEMBER

1-4..... NO SCHOOL -Labor Day Recess

## OCTOBER

16..... NO SCHOOL - Staff Professional Learning- 5 hours; Work Day - 1 hour  
 25..... Students K-12 full day; Parent-Teacher Conferences in the evening  
 26..... Students K-12 half day; Parent-Teacher Conferences in the p.m. & evening  
 27..... NO SCHOOL- End of First Quarter-Secondary

## NOVEMBER

21..... End of Marking Period-Elementary  
 22-24..... NO SCHOOL - Thanksgiving Recess – School Resumes November 27<sup>th</sup>

## DECEMBER

1..... Students K-5 Half Day; 6-12 Full Day  
 22..... Last day of classes - Winter Recess  
 25-5..... NO SCHOOL – Winter Recess-School Resumes January 8<sup>th</sup>

## JANUARY

8..... Classes Resume  
 15..... NO SCHOOL - Martin Luther King Day  
 17..... HS/MS Exams; K-12 students report Full Day  
 18..... HS/MS Exams; 6-12 students report Half Day  
 19..... HS/MS Exams; 6-12 students report Half Day;  
 End of Second Quarter - End of First Semester-Secondary  
 22..... NO SCHOOL -Staff Work Day- 5 hours; Professional Learning - 1 hour

## FEBRUARY

19..... NO SCHOOL – Presidents Day  
 20..... NO SCHOOL - Staff Professional Learning

## MARCH

1..... End of Marking Period-Elementary  
 8..... Students K-5 Half Day; 6-12 Full Day  
 14..... Students-K-5 half day; Parent-Teacher Conferences in the p.m. & evening  
 Students 6-12 full day; Parent-Teacher Conferences in the evening  
 25-29..... NO SCHOOL-Spring Break-School Resumes April 1st; End of Third Quarter

## APRIL

10\*..... PSAT/SAT Test Day; K-12 report full day  
 11\*..... PSAT/SAT Test Day; K-12 report full day

## MAY

24..... Students report half day  
 27..... NO SCHOOL -Memorial Day

## JUNE

6..... 6-12 Exams; Students 6-12 report half-day  
 7..... K-11 half-day-Teacher Work Day P.M.  
 Last Day for students and teachers; End of Semester/Trimester

JANUARY 2024						
S	M	T	W	Th	F	S
						6
7	8	9	10	11	12	13
14	15	16	17	18	19	20
21	22	23	24	25	26	27
28	29	30	31			

FEBRUARY 2024						
S	M	T	W	Th	F	S
					1	2
3	4	5	6	7	8	9
10	11	12	13	14	15	16
17	18	19	20	21	22	23
24	25	26	27	28	29	
30						

MARCH 2024						
S	M	T	W	Th	F	S
					1	2
3	4	5	6	7	8	9
10	11	12	13	14	15	16
17	18	19	20	21	22	23
24	25	26	27	28	29	30
31						

APRIL 2024						
S	M	T	W	Th	F	S
	1	2	3	4	5	6
7	8	9	10	11	12	13
14	15	16	17	18	19	20
21	22	23	24	25	26	27
28	29	30				

MAY 2024						
S	M	T	W	Th	F	S
			1	2	3	4
5	6	7	8	9	10	11
12	13	14	15	16	17	18
19	20	21	22	23	24	25
26	27	28	29	30	31	

JUNE 2024						
S	M	T	W	Th	F	S
						1
2	3	4	5	6	7	8
9	10	11	12	13	14	15
16	17	18	19	20	21	22
23	24	25	26	27	28	29
30						

AUGUST 2023						
S	M	T	W	Th	F	S
		1	2	3	4	5
6	7	8	9	10	11	12
13	14	15	16	17	18	19
20	21	22	23	24	25	26
27	28	29	30	31		

SEPTEMBER 2023						
S	M	T	W	Th	F	S
						2
3	4	5	6	7	8	9
10	11	12	13	14	15	16
17	18	19	20	21	22	23
24	25	26	27	28	29	30

OCTOBER 2023						
S	M	T	W	Th	F	S
1	2	3	4	5	6	7
8	9	10	11	12	13	14
15	16	17	18	19	20	21
22	23	24	25	26	27	28
29	30	31				

NOVEMBER 2023						
S	M	T	W	Th	F	S
			1	2	3	4
5	6	7	8	9	10	11
12	13	14	15	16	17	18
19	20	21	22	23	24	25
26	27	28	29	30		

DECEMBER 2023						
S	M	T	W	Th	F	S
					1	2
3	4	5	6	7	8	9
10	11	12	13	14	15	16
17	18	19	20	21	22	23
24	25	26	27	28	29	30
31						

	No School		New Teacher Professional Learning/Orientation		Parent Teacher Conferences		6-12 Half Day		First/Last Day of School
	Half Day of School		Professional Learning		Teacher Work Day		K-5 Half Day		PSAT/SAT Test Day
				178	Student Days	185	Teacher Days	30	District Professional Learning Hours



### Elementary Food Truck Rally

Thursday, August 17  
4:30 - 6:30 pm  
Elementary Bus Loop

### LMS Block Party

Thursday, August 17  
5:00 - 7:00 pm  
LMS North Parking Lot

### LHS Freshman/New Student Orientation

Friday, August 25  
8:00 - Noon am

### LMS 6th grade WEB Orientation

Friday, August 25  
8:00 am - Noon

### 6TH GRADE/NEW STUDENT ORIENTATION

WEB (Where Everybody Belongs) Orientation is for any incoming 6th grade student or any student that is new to Lincoln Middle School. This orientation is designed to make the transition from elementary school to middle school a positive and successful one. Eighth graders will be serving as leaders and mentors. Large and small group activities are designed to address students' needs and concerns in an enjoyable manner. Following is some important information:

- Orientation for all 6th graders and new students to Lincoln Middle School is Friday, August 25, 2023 from 8:00am-12:00pm.
- You may drop your child off at the gymnasium entrance. This is a student only function so we encourage you to let your child attend on his or her own.
- An optional parent meeting will be held at 8:00 am in the Middle School Media Center with our administrators and the Middle School parent group, PS3.
- Your child is encouraged not to bring backpacks, purses or other like items, as the day is quite active. Also, please make certain that your child wears comfortable clothing that does not restrict movement. Skirts are not recommended.
- A healthy snack will be provided.

**Be a part of SPLITTER NATION!**

Don't live in the Lincoln Consolidated Schools district? Apply now through School of Choice for Fall 2023



**LINK CREW 9TH GRADE/ NEW STUDENT ORIENTATION**  
9:00-11:00 am  
August 25, 2023  
LHS East Gym

Link Crew is a program of 11th and 12th graders who will be there for YOU throughout the year!

Wear comfortable clothes, don't bring all your stuff, and you won't need your cell phone ... travel light!

We are excited that you are joining us at Lincoln

